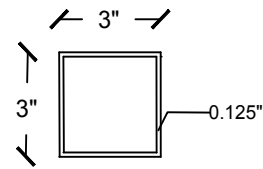


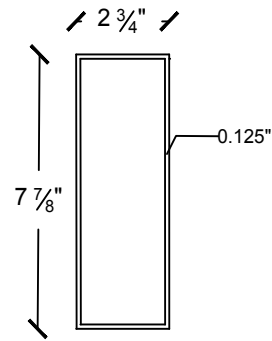
**FREESTANDING STRUCTURE**

CONCRETE DECK (FOR DIFFERENT CONDITIONS REFER TO SITE SPECIFIC ENGINEERING)



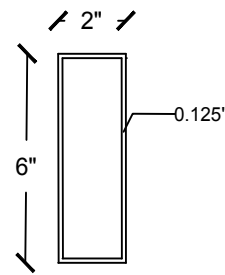
1

**3" X 3" Post**



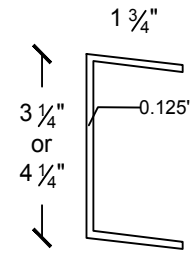
2

**3" X 8" Beam**



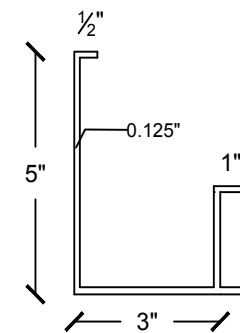
3

**2" X 6" Rafter**



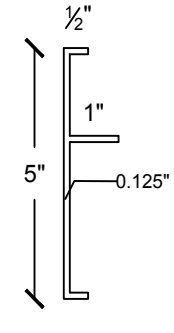
4

**Header**



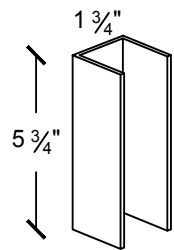
5

**E-Gutter**



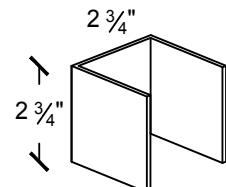
6

**Fascia**



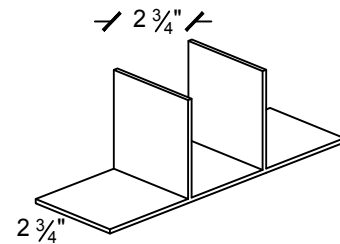
7

**Receiving Channel**



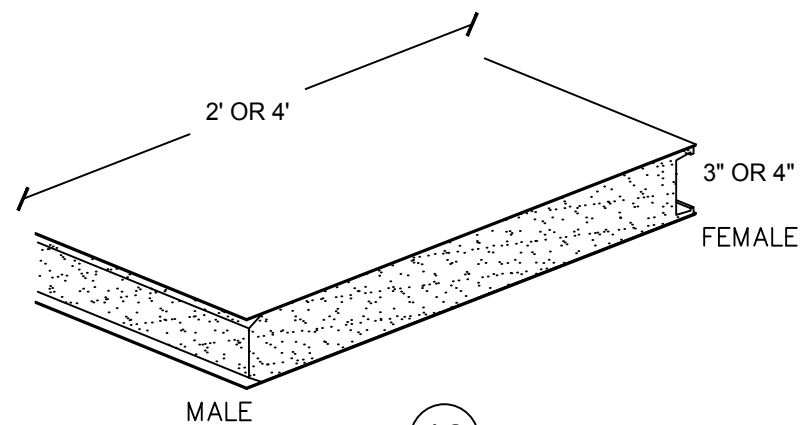
8

**Post "C" Channel**



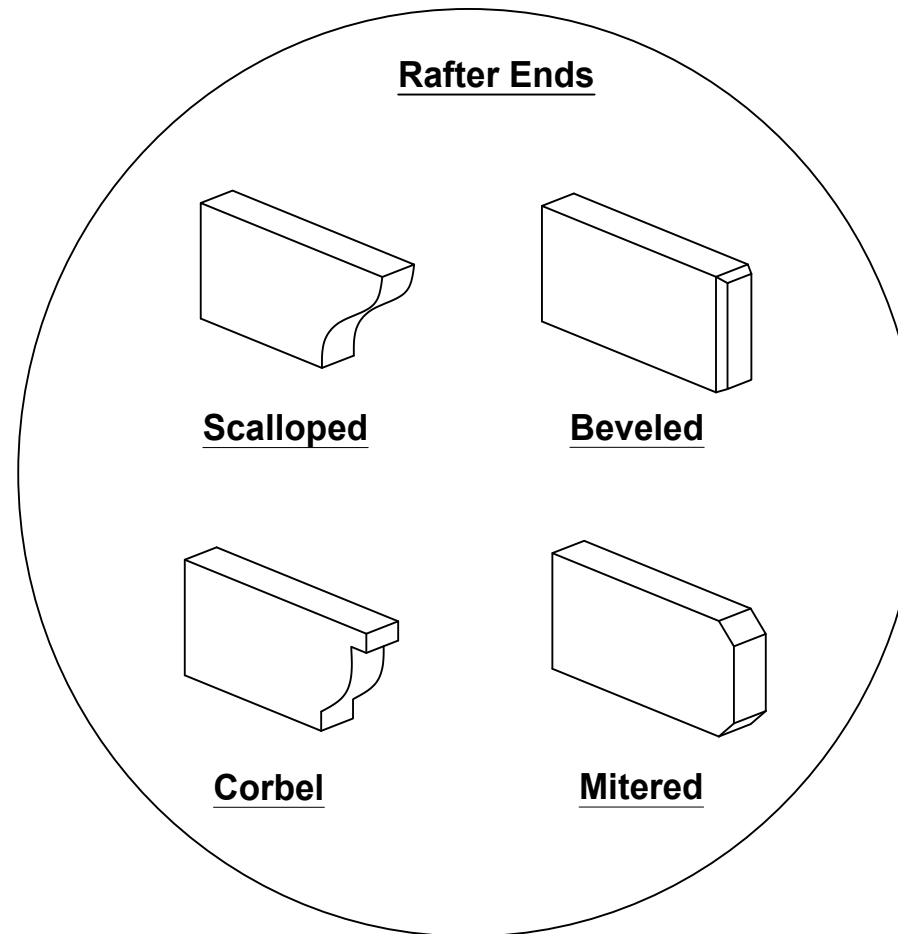
9

**Post Bracket**

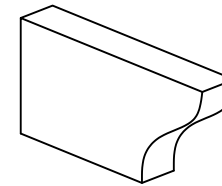


10

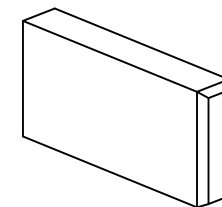
**Insulated Aluminum Panel**



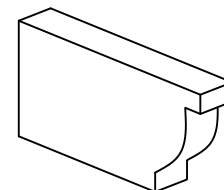
**Rafter Ends**



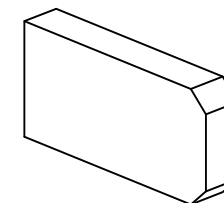
**Scalloped**



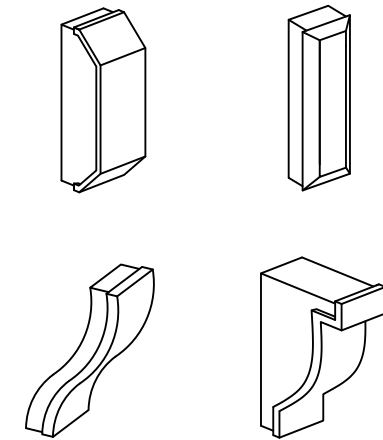
**Beveled**



**Corbel**

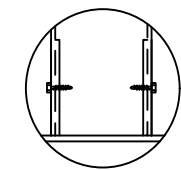
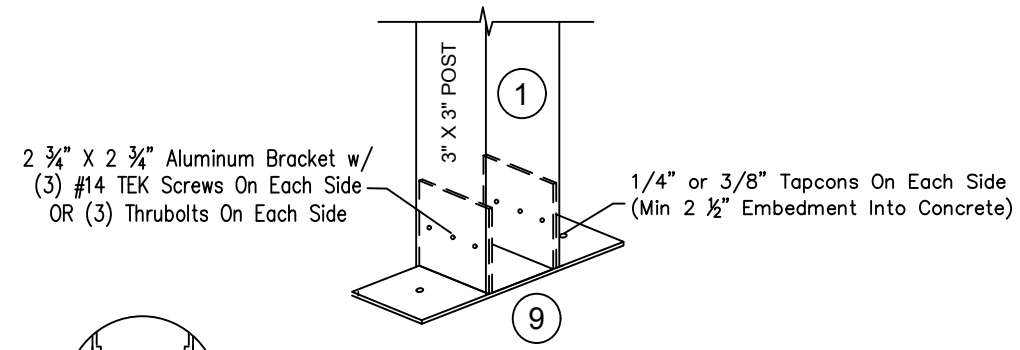


**Mitered**

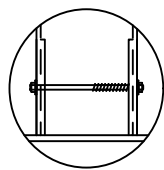


**End Caps**

**COMPONENTS**



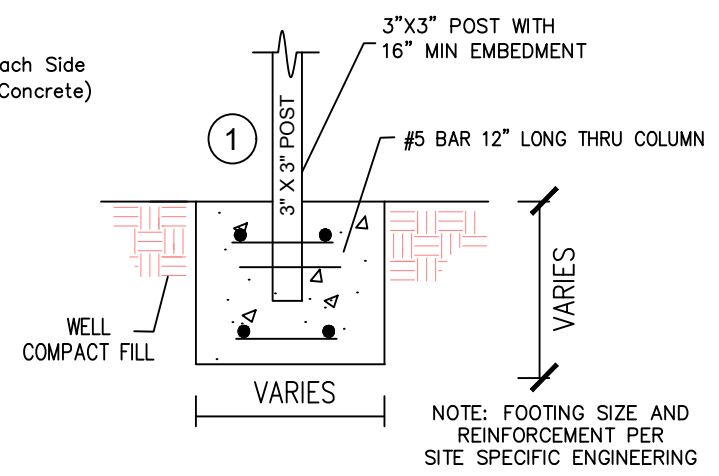
#14 TEK Screws



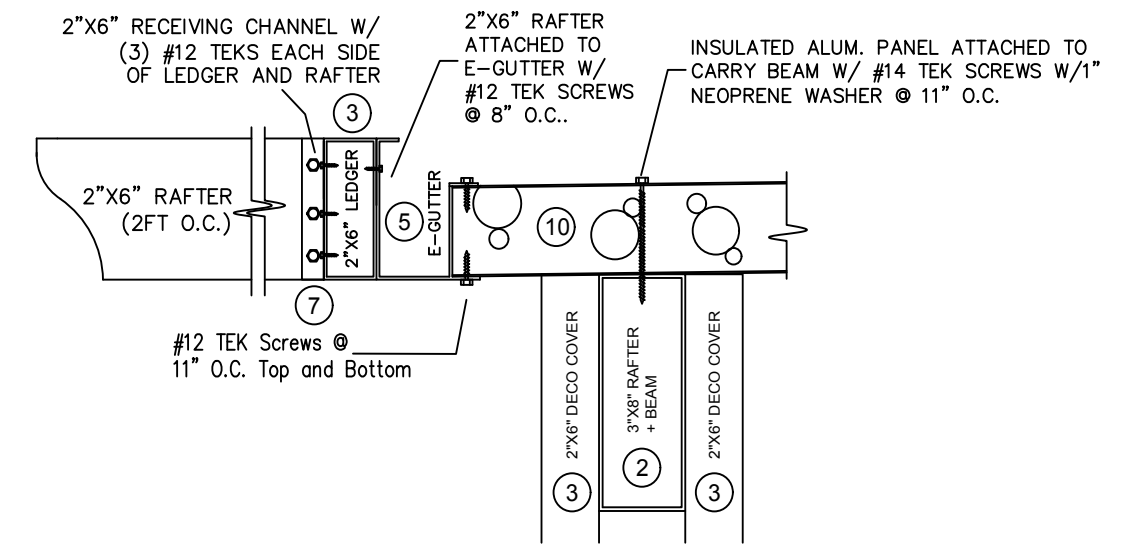
1/4" or 3/8" Thru-bolts

CONCRETE SLAB OR FOOTING  
(PER SITE SPECIFIC ENGINEERING)

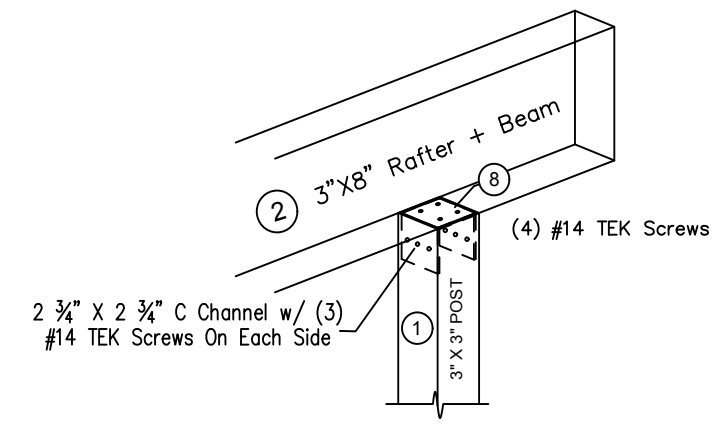
**POST ATTACHMENT (ATTACHED)**



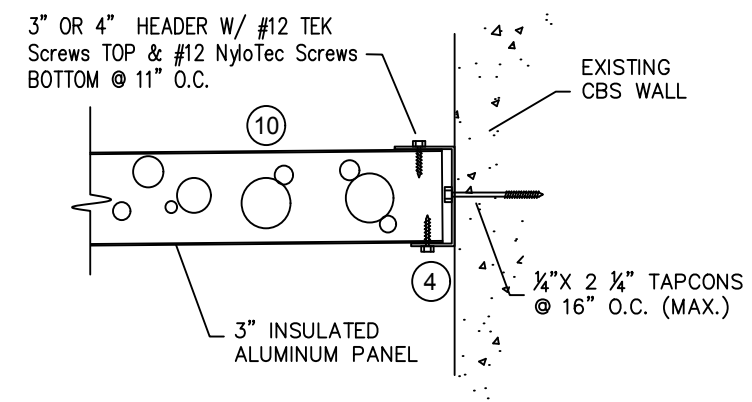
**POST ATTACHMENT (FREESTANDING)**



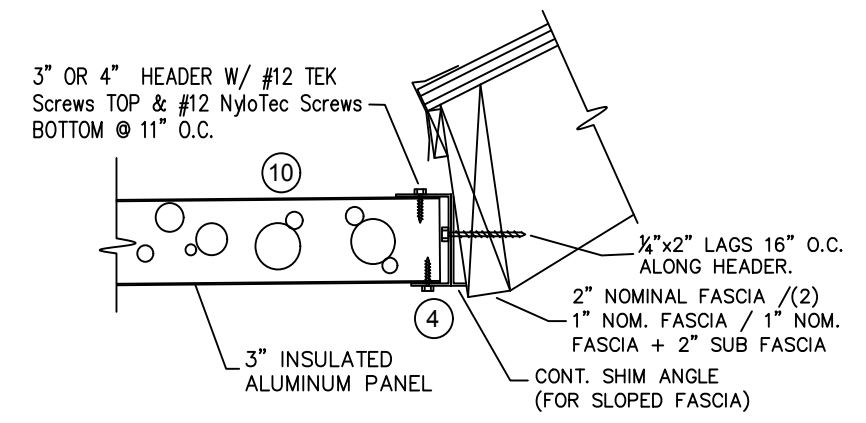
**DECO RAFTER DETAIL**



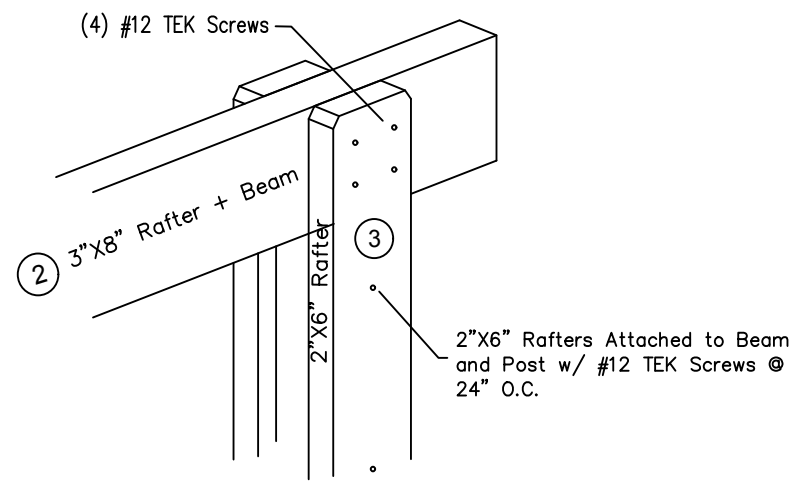
**POST TO BEAM CONNECTION**



**INSULATED PANEL TO CBS WALL**

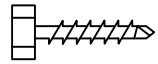


**INSULATED PANEL TO FASCIA**

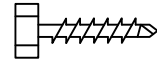


**POST COVER CONNECTION**

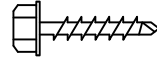
**CONNECTIONS**



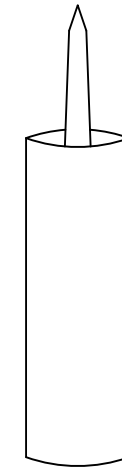
**#12x1" TEK Screws**



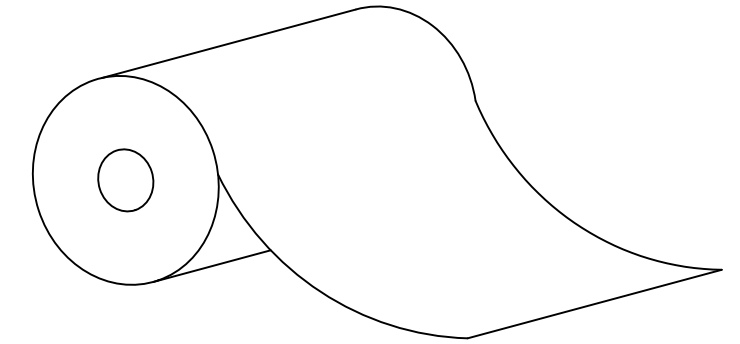
**#14x1" TEK Screws**



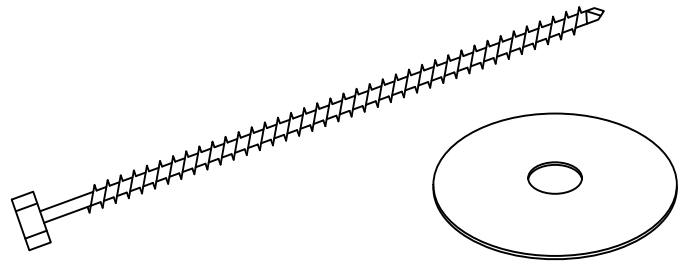
**#12x1" NyloTec Screws**



**Caulking  
(White or Bronze)**

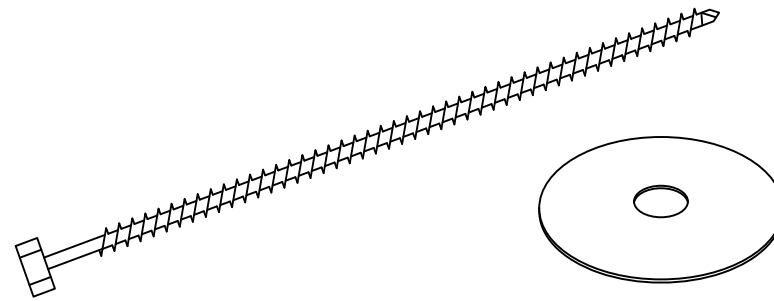


**Peel & Seal**



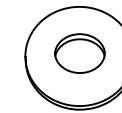
**#14x5" TEK Screws w/  
Neoprene Washer**

FOR 3" INSULATED PANELS

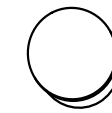


**#14x6" TEK Screws w/  
Neoprene Washer**

FOR 4" INSULATED PANELS



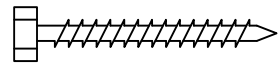
**3/8" Washers**



**3/8" Plastic Caps**



**1/4"x2 1/4" Tapcon Screws**



**1/4"x2" Lag Screws**



**3/8"x3 1/2" Hex Bolts**

**HARDWARE**